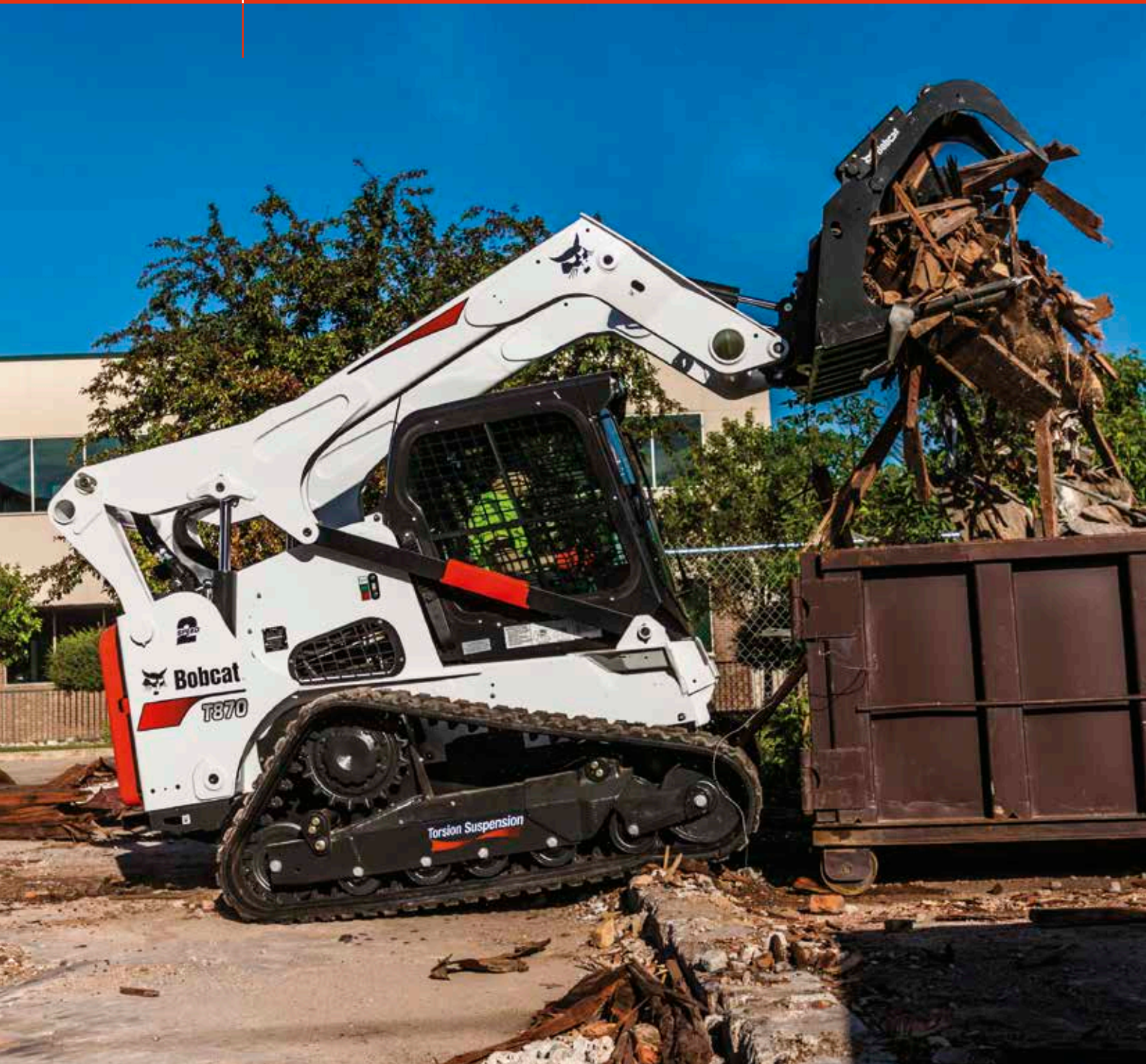




Bobcat®

**COMPACT TRACK LOADERS
T870**



One Tough Animal®

T870 — SPECIFICATIONS

Machine Rating

Rated operating capacity (ISO 14397-1)	1584 kg
Tipping load (ISO 14397-1)	4306 kg
Pump capacity	90.10 L/min
Pump capacity (with high flow option)	141.60 L/min
System relief at quick couplers	23.8-24.5 MPa
Max. travel speed	11.6 km/h
Max. travel speed (high range – optional)	18.3 km/h

Engine

Make / Model	Kubota / V3800-DI-T-E3
Fuel	Diesel
Cooling	Liquid
Power at 2400 RPM	74.0 kW
Torque at 1500 RPM (SAE J1995 Gross)	325.0 Nm
Number of cylinders	4
Displacement	3769 cm ³
Fuel tank	134.80 L

Weights

Operating weight	5751 kg
Shipping weight	5355 kg

Controls

Vehicle steering	Direction and speed controlled by two joysticks
Loader hydraulics tilt and lift	Selectable Joystick Control (SJC)
Front auxiliary (standard)	Electrical switch on right-hand joystick

Drive System

Transmission	Infinitely variable tandem hydrostatic piston pumps, driving two fully reversing hydrostatic motors
--------------	---

Standard Features

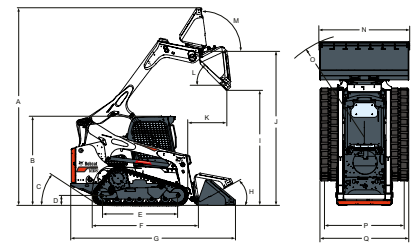
Roller Suspension™	Lift arm support
Selectable Joystick Controls (SJC)	Work lights, front and rear
Adjustable suspension seat	Parking brake
Deluxe operator cab, includes top and rear window ¹	Seat belt
Auxiliary hydraulics: variable flow/maximum flow	Seat bar
Bob-Tach™ frame	Turbo-charger with approved spark arrestor
Bobcat Interlock Control System (BICS)	Tracks — rubber — 450 mm
Instrumentation	Warranty: 12 months or 2000 hours, whichever occurs first

1. * Roll Over Protective Structure (ROPS) – meets requirements of SAE-J1040 and ISO 3471; Falling Object Protective Structure (FOPS) - meets requirements of SAE-J1043 and ISO 3449, Level I

Options

Two speed	Air conditioning
Heavy duty radio	Air ride seat with 3 point seat belt
Deluxe instrument panel	Back-up alarm
Power Bob-Tach™	Beacon
Hydraulic bucket positioning (including ON/OFF switch)	Engine block heater
Cab enclosure with heat	Fire extinguisher
High-flow auxiliary hydraulics	Strobe

Dimensions



(A)	4689.0 mm	(J)	3657.0 mm
(B)	2118.0 mm	(K)	927.0 mm
(C)	33.0°	(L)	42.0°
(D)	218.0 mm	(M)	98.0°
(E)	1749.0 mm	(N)	2133.0 mm
(F)	3030.0 mm	(O)	2514.0 mm
(G)	3910.0 mm	(P)	1658.0 mm
(H)	30.0°	(Q)	2108.0 mm
(I)	2728.0 mm		

Attachments

Angle Brooms	Pallet Forks, Standard
Augers	Planers
Backhoes	Rear Stabilizers
Bale Forks	Root Grapples
Breakers	Rotary Grinders
Brushcat™ Rotary Cutters	Sand Cleaners
Brush Saws	Seeders
Concrete Pumps	Silt Fence Installers
Construction / Industrial Buckets	Skeleton Buckets
Dozer Blades	Snow & Light Material Buckets
Drop Hammers	Snow Blades
Dumping Hoppers	Snow Pushers
Flail Cutters	Sod Layers
Forestry Cutters	Soil Conditioners
Graders	Spreaders
Grapples, Industrial	Stump Grinders
Landplanes	Tillers
Landscape Rakes	Tree Transplanters
Laser Equipment	Trench Compactors
Miscellaneous	Utility Frames
Mixing Buckets	Vibratory Rollers
Mowers	Water Kits
Packer Wheels	Wheel Saws
Pallet Fork Accessories	Wood Chippers
Pallet Forks, Hydraulic	



Bobcat is a Doosan Company.

Doosan is a global leader in construction equipment, power & water solutions, engines, and engineering proudly serving customers and communities for more than a century. | Bobcat and the Bobcat logo are registered trademarks of Bobcat Company in the United States and various other countries. ©2017 Bobcat Company. All Rights Reserved.



Bobcat®

www.bobcat.com

Certain specification(s) are based on engineering calculations and are not actual measurements. Specification(s) are provided for comparison purposes only and are subject to change without notice. Specification(s) for your individual Bobcat equipment will vary based on normal variations in design, manufacturing, operating conditions, and other factors. Pictures of Bobcat units may show other than standard equipment.

